

ONLINE ONLY AUCTION

STARTS: MONDAY, MAY 4, 2026, 12:30 PM
ENDS: SATURDAY, MAY 9, 2026, 12:30 PM



LAND



RUSTIC CABIN ON 7.5+ WOODED ACRES

Noble County, OH,
Estate Auction

HANSON RD.,
BEVERLY, OH 45715



Scan for auction
details, including
directions.

All sells to settle
the estate.

www.kikoauctions.com | 800.533.5456

Information is believed to be
accurate but not guaranteed.
KIKO Auctioneers

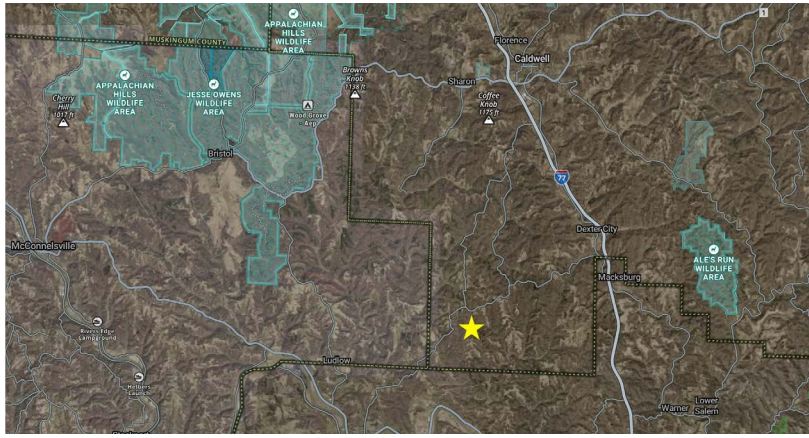


Open House: Saturday, May 9, 2026, 10:00-11:30 AM

Real Estate. Features a rustic retreat cabin situated on 7.55 wooded acres in southern Noble County. Ideal for hunting and outdoor recreation. There is a heavy population of oak trees, currently producing acorns for wildlife. Marketable timber potential. A nice stream flows along the west side of the property. The cabin was built in 2003, totaling 576 sq. ft. Features include a lovely covered front porch, 100-amp breaker electric, wood stove heat, rainwater collection, and a private setting. Public water service available, Tri-County Rural Water. Remote location on a nicely graded township road. Conveniently located less than 10 miles off I-77. GPS coordinates: 39.60747, -81.55577. Current taxes are \$677 per year. Noble County parcel #16-0021130.004. Walk the land at your convenience. Cabin will be accessible during scheduled open house. Contact Colton Kiko with any questions, 330-614-2478.

Terms On Real Estate: 10% down auction day, balance due at closing. A 10% buyer's premium will be added to the highest bid to establish the purchase price. Any desired inspections must be made prior to bidding. All information contained herein was derived from sources believed to be correct. Information is believed to be accurate but not guaranteed.

Auction By Order Of: Melissa C. Murphy, Executor of the Mark Patrick Murphy Estate, Cuyahoga County Case #2025EST299175.



COLTON KIKO
AUCTIONEER/REALTOR®
330.614.2478
coltonkiko@kikocompany.com



KIKO REALTORS
AUCTIONEERS
ADVISORS

Information is believed to be accurate but not guaranteed.
KIKO Auctioneers

